



234

# Ginevra

design by Forme

Angular lines and precise geometries form up a handle with unique characteristics. Two overlapping flat rectangles with a single curvature at the neck.

*Linee spigolose e geometrie esatte compongono una maniglia dalle caratteristiche uniche. Due rettangoli piatti sovrapposti con un'unica curvatura all'altezza del collo.*

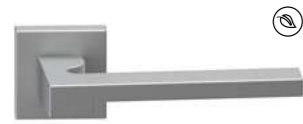


235

“The perfection of geometry arranged on superimposed planes.”

# Finishes

# Finiture



**C06**  
Pearl Chrome  
*Cromo Perla*



**N02**  
Satin Nickel  
*Nichel Satinato*



**N52**  
Matt Black  
*Nero Opaco*

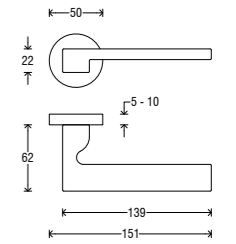


**S02**  
Brassed Satin Matt  
*Ottonato Satinato Opaco*

## Handle on round rosette *Maniglia su rosetta tonda*



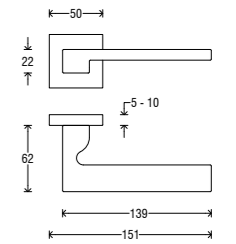
Handle <i>Impugnatura</i>	Rosette <i>Rosetta</i>	Finish <i>Finitura</i>
<b>A430</b>	<b>RFXTO (Fixa)</b>	<b>C06</b>
	<b>RSXTO (Slim)</b>	<b>N02</b>
		<b>N52</b>
		<b>S02</b>



## Handle on square rosette *Maniglia su rosetta quadra*



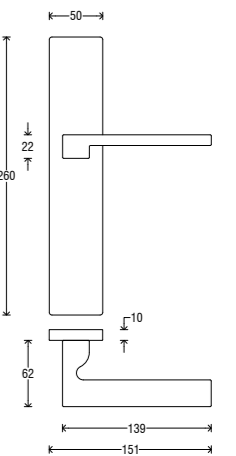
Handle <i>Impugnatura</i>	Rosette <i>Rosetta</i>	Finish <i>Finitura</i>
<b>A430</b>	<b>RFXQ0 (Fixa)</b>	<b>C06</b>
	<b>RSXQ0 (Slim)</b>	<b>N02</b>
		<b>N52</b>
		<b>S02</b>



## Handle on Asti plate *Maniglia su placca Asti*



Handle <i>Impugnatura</i>	Plate <i>Placca</i>	Finish <i>Finitura</i>
<b>A430</b>	<b>P06 C</b>	<b>C06</b>
	<b>P06 O</b>	<b>N02</b>
	<b>P06 Y</b>	<b>N52</b>
	<b>P06 W</b>	<b>S02</b>



## DK (Dry Keep) on rectangular rosette *DK su rosetta rettangolare*



Handle <i>Impugnatura</i>	Rosette <i>Rosetta</i>	Finish <i>Finitura</i>
<b>D430</b>	<b>RRD</b>	<b>C06</b>
		<b>N02</b>
		<b>N52</b>
		<b>S02</b>

