

222

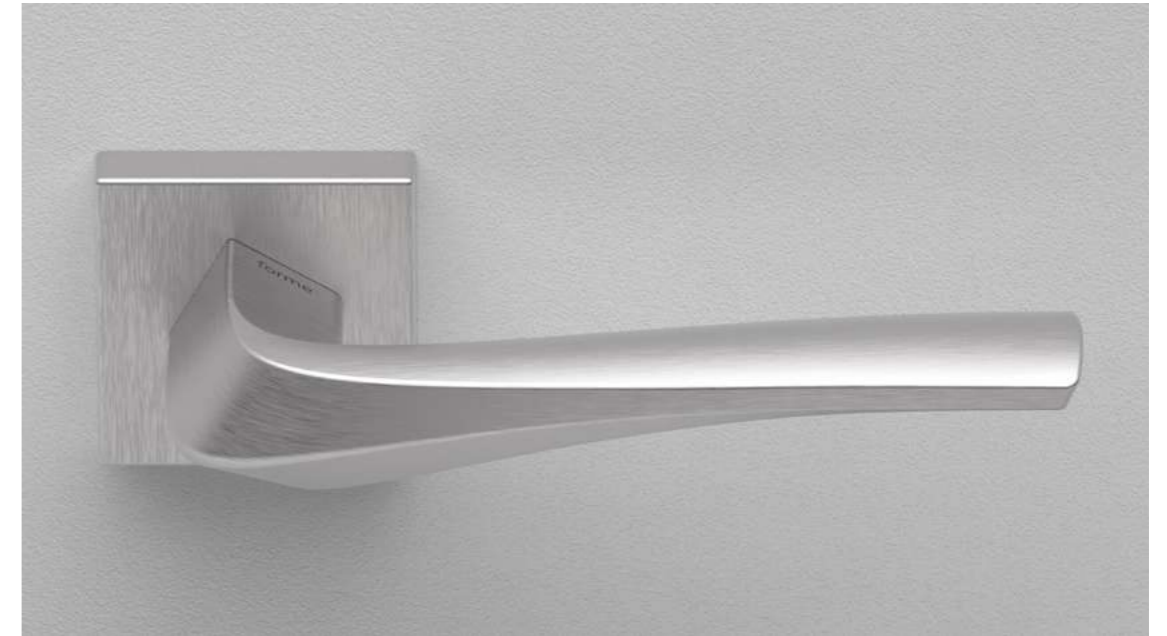
Minerva

design by Kawajun

A strongly inclined square neck rises from the square rosette, giving the impression of the handle rotating on itself. With strong curved lines like a flowing river, Minerva is pure dynamism.

Dalla rosetta quadrata si erge un collo quadrato fortemente inclinato per imprimere l'idea di una maniglia che ruota su se stessa. Come un fiume che scorre, Minerva è puro dinamismo.

“Soft and sinuous lines for the maximum expression of fluidity.”



223

Finishes

Finiture



C02
Satin Chrome
Cromo Satinato



N16
Pearl Nickel
Nichel Perla



N52
Matt Black
Nero Opaco

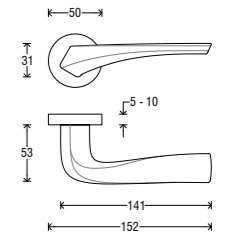


P01
Gold PVD
PVD Oro

Handle on round rosette *Maniglia su rosetta tonda*



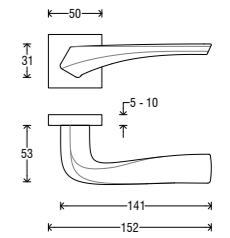
Handle <i>Impugnatura</i>	Rosette <i>Rosetta</i>	Finish <i>Finitura</i>
A278	RFXTO (Fixa)	C02
	RSXTO (Slim)	N16
		N52
		P01



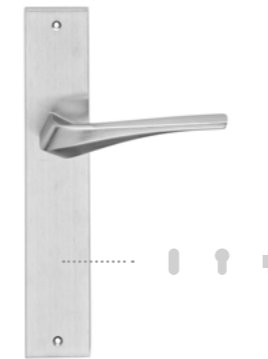
Handle on square rosette *Maniglia su rosetta quadra*



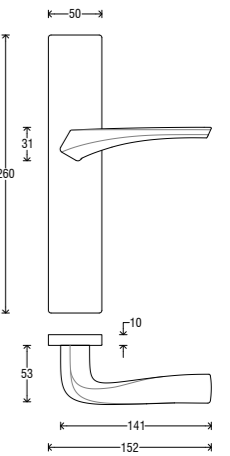
Handle <i>Impugnatura</i>	Rosette <i>Rosetta</i>	Finish <i>Finitura</i>
A278	RFXQ0 (Fixa)	C02
	RSXQ0 (Slim)	N16
		N52
		P01



Handle on Asti plate *Maniglia su placca Asti*



Handle <i>Impugnatura</i>	Plate <i>Placca</i>	Finish <i>Finitura</i>
A278	P06 C	C02
	P06 O	N16
	P06 Y	N52
	P06 W	P01



DK (Dry Keep) on rectangular rosette *DK su rosetta rettangolare*



Handle <i>Impugnatura</i>	Rosette <i>Rosetta</i>	Finish <i>Finitura</i>
D278	RRD	C02
		N16
		N52
		P01

