



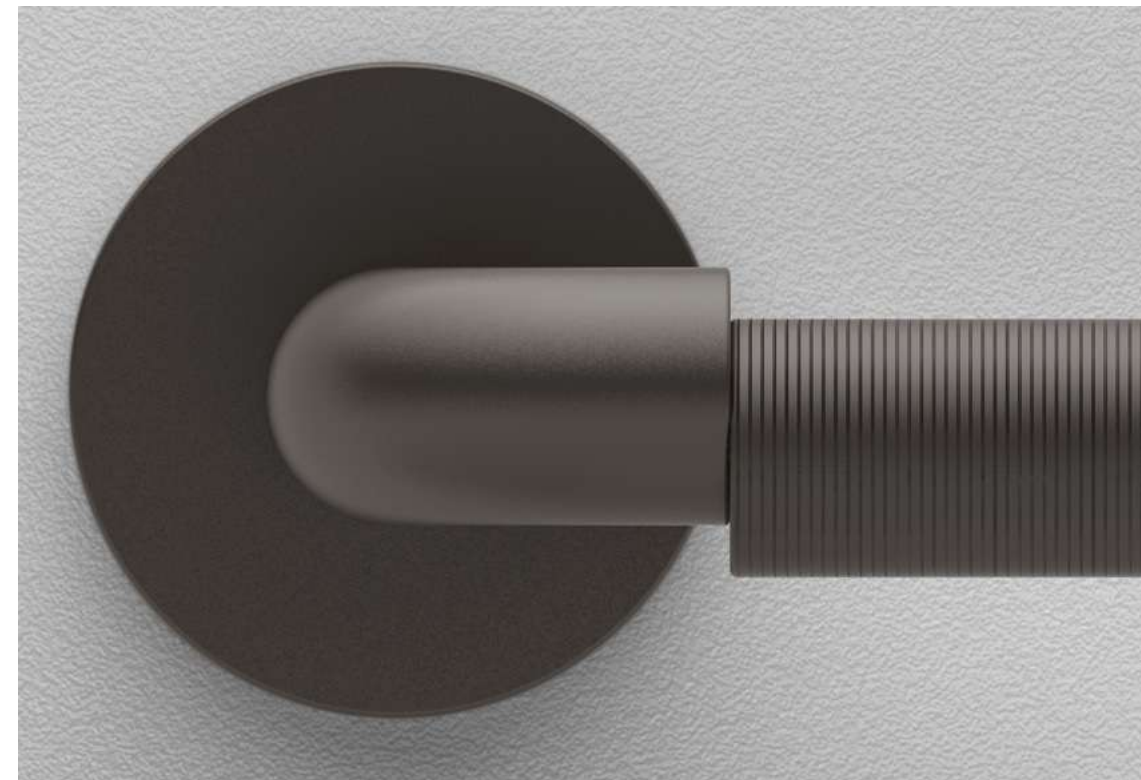
# Shinobi Groove

design by OSMO

The Groove version of Shinobi features a knurling on the final part of the handle. A texture that enriches the design and reinforces the ergonomics of the structure.

*La versione Groove di Shinobi presenta una godronatura sulla parte finale dell'impugnatura. Una texture che arricchisce il disegno e rafforza l'ergonomia della struttura.*

“A texture creating a new feeling, in more ways than one.”



# Finishes

# Finiture

BR ZA



**B11**  
Pearl Bronze  
*Bronzo Perla*



**B31**  
Matt White  
*Bianco Opaco*



**C01**  
Polished Chrome  
*Cromo Lucido*



**C02**  
Satin Chrome  
*Cromo Satinato*



**N16**  
Pearl Nickel  
*Nichel Perla*



**N52**  
Matt Black  
*Nero Opaco*



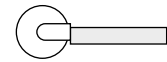
**P01**  
Gold PVD  
*PVD Oro*



**S02**  
Brass Satin Matt  
*Ottonato Satinato Opaco*

# Processing

# Lavorazioni



## KNURLS GODRONATURE



**A523**  
Vertical Knurling  
*Godronatura Verticale*



**A524**  
Horizontal Knurling  
*Godronatura Orizzontale*

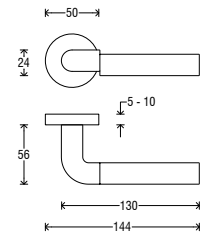


**A525**  
Rhombus Knurling  
*Godronatura Rombo*

## Handle on round rosette *Maniglia su rosetta tonda*



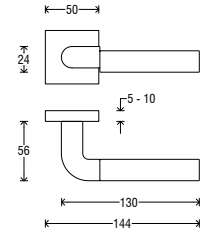
Handle Impugnatura	Rosette Rosetta	Finish Finitura
A523	RFXTO (Fixa)	B11
A524	RSXTO (Slim)	B31
A525		C01
		C02
		N16
		N52
		P01
		S02



## Handle on square rosette *Maniglia su rosetta quadra*



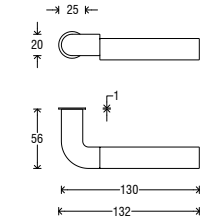
Handle Impugnatura	Rosette Rosetta	Finish Finitura
A523	RFXQ0 (Fixa)	B11
A524	RSXQ0 (Slim)	B31
A525		C01
		C02
		N16
		N52
		P01
		S02



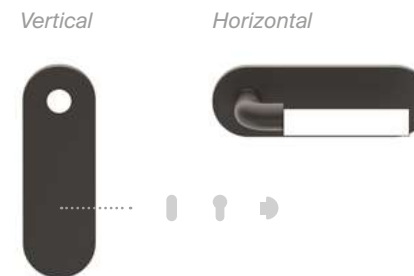
## Handle on minimal round rosette *Maniglia su rosetta minimal tonda*



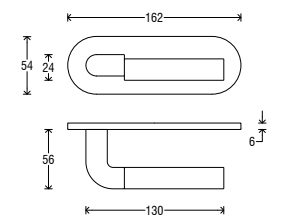
Handle Impugnatura	Rosette Rosetta	Finish Finitura
A523	RMT	B11
A524		B31
A525		C01
		C02
		N16
		N52
		P01
		S02



## Handle on Short T plate *Maniglia su placca Short T*



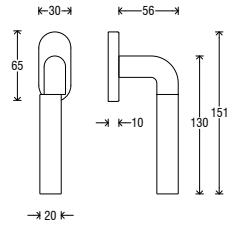
Handle Impugnatura	Rosette Rosetta	Finish Finitura
A523	PST	B11
A524		B31
A525		C01
		C02
		N16
		N52
		P01
		S02



DK (Dry Keep) on oval rosette  
DK su rosetta ovale



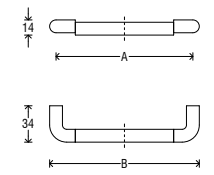
Handle Impugnatura	Rosette Rosetta	Finish Finitura
D523	ROD	B11
D524		B31
D525		C01
		C02
		N16
		N52
		P01
		S02



Furniture handle  
Maniglietta per mobile



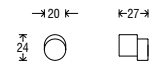
Handle Impugnatura	Finish Finitura
E523	B11
E524	B31
E525	C01
	C02
	N16
	N52
	P01
	S02



Furniture knob  
Pomolo per mobile

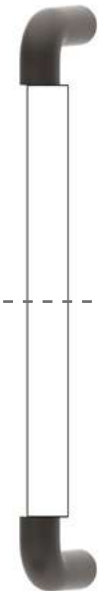


Handle Impugnatura	Finish Finitura
PM15	B11
PM16	B31
PM17	C01
	C02
	N16
	N52
	P01
	S02

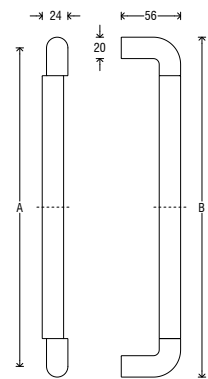


VERSIONS	A (mm)	B (mm)
01	128	140
02	160	172
03	192	204
04	224	236
05	320	332
06	500	512
07	700	712

Pull handle  
Maniglione



Handle Impugnatura	Finish Finitura
MG71	B11
MG72	B31
MG73	C01
	C02
	N16
	N52
	P01
	S02



VERSIONS	A (mm)	B (mm)
X0A	445	467
X0B	645	667
X0C	865	887

Turn & release set  
Set Nottolino



Turn & release Nottolino	Rosette Rosetta	Finish Finitura
NS38	RFXTO	B11
NS39		B31
NS40		C01
		C02
		N16
		N52
		P01
		S02

