

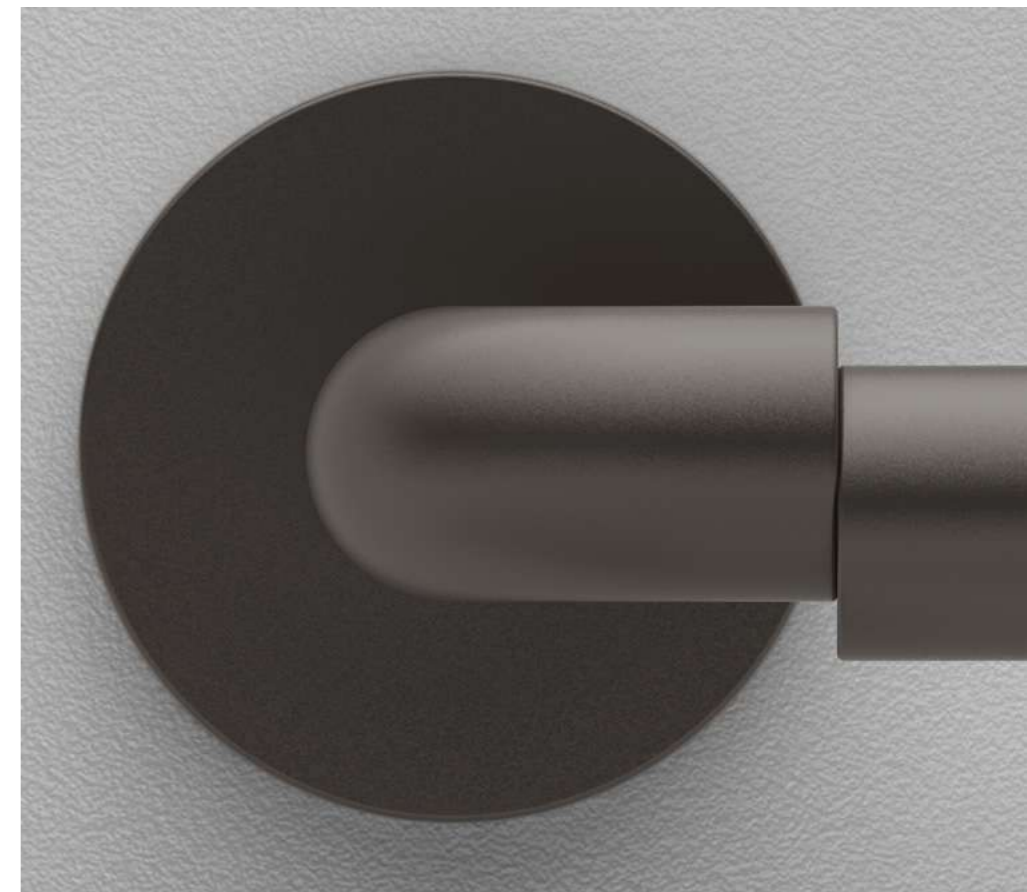
Shinobi

design by OSMO

For Shinobi, one cut perfectly splits the iconic shape of the handle, creating an evocative, reimagined design. Two suspended elements that harmonise and impress.

In Shinobi un taglio rompe idealmente la forma iconica della maniglia creando un nuovo equilibrio di grande forza evocativa. Due elementi sospesi che si ritrovano in perfetta armonia.

“Slicing through the traditional handle, creating an entirely new shape.”



Finishes

Finiture



B11
Pearl Bronze
Bronzo Perla



B31
Matt White
Bianco Opaco



C01
Polished Chrome
Cromo Lucido



C02
Satin Chrome
Cromo Satinato



N16
Pearl Nickel
Nichel Perla



N52
Matt Black
Nero Opaco



P01
Gold PVD
PVD Oro

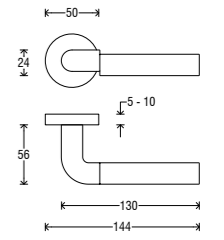


S02
Brassed Satin Matt
Ottonato Satinato Opaco

Handle on round rosette *Maniglia su rosetta tonda*



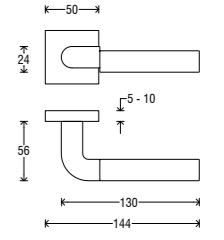
Handle <i>Impugnatura</i>	Rosette <i>Rosetta</i>	Finish <i>Finitura</i>
A522	RFXTO (Fixa) RSXTO (Slim)	B11 B31 C01 C02 N16 N52 P01 S02



Handle on square rosette *Maniglia su rosetta quadra*



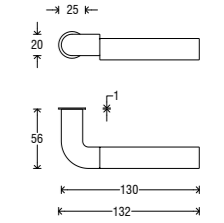
Handle <i>Impugnatura</i>	Rosette <i>Rosetta</i>	Finish <i>Finitura</i>
A522	RFXQ0 (Fixa) RSXQ0 (Slim)	B11 B31 C01 C02 N16 N52 P01 S02



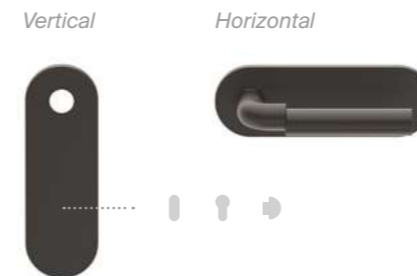
Handle on minimal round rosette *Maniglia su rosetta minimal tonda*



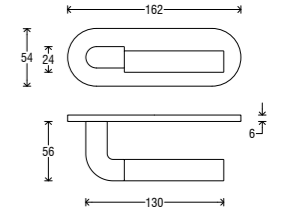
Handle <i>Impugnatura</i>	Rosette <i>Rosetta</i>	Finish <i>Finitura</i>
A522	RMT	B11 B31 C01 C02 N16 N52 P01 S02



Handle on Short T plate *Maniglia su placca Short T*



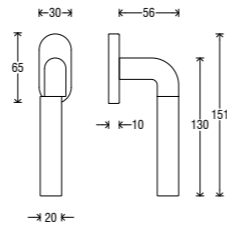
Handle <i>Impugnatura</i>	Rosette <i>Rosetta</i>	Finish <i>Finitura</i>
A522	PST	B11 B31 C01 C02 N16 N52 P01 S02



DK (Dry Keep) on oval rosette
DK su rosetta ovale



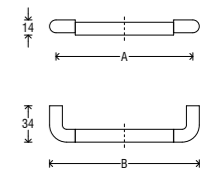
Handle Impugnatura	Rosette Rosetta	Finish Finitura
D522	ROD	B11
		B31
		C01
		C02
		N16
		N52
		P01
		S02



Furniture handle
Maniglietta per mobile



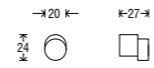
Handle Impugnatura	Finish Finitura
E522	B11
	B31
	C01
	C02
	N16
	N52
	P01
	S02



Furniture knob
Pomolo per mobile



Handle Impugnatura	Finish Finitura
PM14	B11
	B31
	C01
	C02
	N16
	N52
	P01
	S02

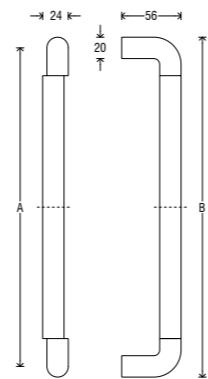


VERSIONS	A (mm)	B (mm)
01	128	140
02	160	172
03	192	204
04	224	236
05	320	332
06	500	512
07	700	712

Pull handle
Maniglione



Pull handle Maniglione	Finish Finitura
MG59	B11
	B31
	C01
	C02
	N16
	N52
	P01
	S02



VERSIONS	A (mm)	B (mm)
X0A	445	467
X0B	645	667
X0C	865	887

Turn & release set
Set Nottolino



Turn & release Nottolino	Rosette Rosetta	Finish Finitura
NS36	RFXT0	B11
		B31
		C01
		C02
		N16
		N52
		P01
		S02

